



SUPERSONIC

Phonic Friends
Parent Newsletter
The Basics 2 Group 6



Previous spellings

s a t p
i m n d
g o c k
c k e u r
h b f l

Tess' Tricky Words

I is the to no go



has his as of into

Nan's Nonsense Words

luff

dall



hess

This group's spellings for the sounds

ll



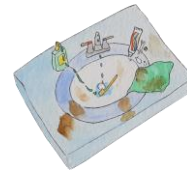
doll

ff



huff

ss



mess

Choose to use

If I hear the sound at the start, I choose to use one l. If I hear it at the end, I choose to use the double my friend.

Build, Read & Write

doll, dull, bill, bell,
fill

huff, puff, cuff, off

kiss, mess, mass

Sound Buttons

dull



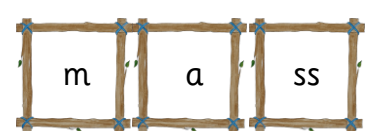
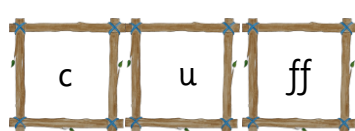
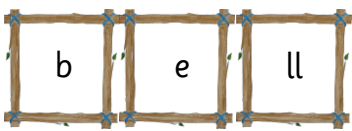
puff



kiss



Spelling Frames



Next group spellings for the sounds

j



jam

v



vet

w



wig

x



mix